



Wireless Transmitter

- de Bedienungsanleitung
- en Instructions for use
- fr Mode d'emploi
- it Istruzioni per l'uso
- nl Gebruiksaanwijzing
- es Modo de empleo
- pt Manual de instruções
- sv Bruksanvisning
- no Instruksjonsbok
- pl Instrukcja obsługi
- ru Руководство по эксплуатации
- cs Návod k obsluze

Schweiz/EU

25 Monate Garantiebedingungen

25 mois conditions de garantie

25 months warranty conditions

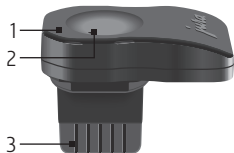


en	Instructions for Use - JURA Wireless Transmitter	4
	JURA Products Ltd warranty conditions.....	6

Proper use

The Wireless Transmitter may only be used with specified JURA interfaces. It provides wireless communication between the JURA Cool Control and the coffee machine, which must be equipped with the JURA Smart Connect (for compatible machines, see www.jura.com). Use for any other purpose will be deemed improper. JURA cannot accept any responsibility for the consequences of improper use.

Overview of Wireless Transmitter



- 1 LED: Indicates the status of the Wireless Transmitter
- 2 Reset button: To connect the Wireless Transmitter to the coffee machine
- 3 Connector: Plugs into the Cool Control's interface

Installation

- ▶ Plug the Wireless Transmitter into the Cool Control's interface.
The Wireless Transmitter switches on automatically.

LED indicators

- LED does not light up: The Cool Control is switched off; the Wireless Transmitter is not being supplied with power.
- LED lights up: The wireless connection between the Wireless Transmitter and the coffee machine has been established.
- LED flashes (1x / second): Attempting to establish a wireless connection.

Connecting to the coffee machine

- i** Some JURA coffee machines have an automatic connect function (refer to the machine's instructions for use).
- i** Please note that the Smart Connect fitted in the coffee machine can only connect with either one Cool Control or one JURA app.
 - ▶ Position the Cool Control near the coffee machine (a maximum of 0.5 m away).
 - ▶ Switch on the Cool Control and the coffee machine.
 - ▶ Press the reset button of the Smart Connect fitted in the coffee machine (e.g. with a paper clip).
 - ▶ Then (within 30 sec.) press **and hold** the reset button of the Wireless Transmitter until the LED lights up to indicate the successful connection.

If a device is switched off and then on again, the wireless connection is re-established automatically.

Contact

JURA Elektroapparate AG
Kaffeeweltstrasse 10
CH-4626 Niederbuchsiten
Tel. +41 (0)62 389 82 33

You will find additional contact details for your country at www.jura.com.

Declaration of conformity: www.jura.com/conformity

JURA Products Ltd warranty conditions

For this machine, which was designed and built for domestic use, JURA Products Ltd, Vivary Way, Colne, Lancashire offers to the end customer, in addition to the rights of guarantee from the retailer, a manufacturer's warranty with the following terms and conditions:

25 months from the date of initial purchase

- 1 For products which are subject to selective distribution, the manufacturer's warranty shall only apply if the JURA machine was purchased at an authorised JURA specialised dealer.
- 2 JURA shall remedy all defects within the warranty period. JURA shall decide whether to remedy the defect by repairing the machine, replacing defective parts or replacing the machine. The performance of warranty services shall not cause the warranty period to be extended or restarted. Replaced parts shall become the property of JURA.
- 3 A warranty service is not applicable for damage or defects caused by incorrect connection, incorrect handling or transport, repair attempts or modifications by unauthorised persons or non-compliance with the instructions for use. In particular, the warranty shall be void if JURA's operating or maintenance instructions are not followed or if maintenance products other than JURA water filters, JURA cleaning tablets or JURA descaling tablets are used which do not correspond to the original specifications. Wearing parts (e.g. seals, grinding discs, valves) are excluded from the warranty, as is damage caused by foreign bodies entering the grinder (e.g. stones, wood, paper clips).
- 4 The sales receipt, specifying the purchase date and machine type, must be provided as evidence of warranty claims. In order to simplify the process, the sales receipt should also include the following information where possible: name and address of the customer and serial number of the machine.
- 5 If the end customer is a company or a legal person, or if the machine is not used in a domestic environment, the manufacturer's warranty is valid for 12 months.

- 6 Warranty services are performed in the United Kingdom. For machines purchased in Europe and taken to another European country, services shall be performed in accordance with the JURA warranty conditions applicable in this country.
- 7 The warranty services shall be performed in the United Kingdom after prior consultation with the service hotline 0844 257 92 29 (charged at local rates) by sending or handing over the product to

JURA Products Ltd.

Service hotline: 0800 304 7470
E-Mail: service@uk.jura.com
Availability: Monday to Friday 9 a.m. – 5.00 p.m.
Service centre address: JURA Products Ltd.
Vivary Mill
Vivary Way
Colne, Lancashire BB8 9NW
Distributor address: JURA Products Ltd.
Vivary Mill
Vivary Way
Colne, Lancashire BB8 9NW

or at other authorised JURA service centres (see www.jura.com).

